

RECORDED

2002 FEB 14 10:33

NANCY HAVILAND
REGISTER OF DEEDS
LIVINGSTON COUNTY, MI.
48843

FIFTEENTH

15/2

#92

**~~FIFTEENTH~~ AMENDED MASTER DEED OF
MOON SHADOWS ON RUSH LAKE CONDOMINIUM AND
REPLAT NO. 5 OF LIVINGSTON COUNTY CONDOMINIUM
SUBDIVISION PLAN NO. 28**

Rush Lake Development Group Limited Partnership, a Michigan Limited Partnership, whose address is 6195 Saline-Ann Arbor Rd., Saline, Michigan 48176, being the developer of Moon Shadows on Rush Lake Condominium, a Condominium Project established pursuant to the Master Deed thereof recorded at Liber 1463, Pages 923 to 985, and amendments thereto recorded at Liber 1570, Pages 522 to 538, Livingston County Records, Liber 1944, Pages 97-117, Liber 2088, Pages 22-40, and Liber 2242, Pages 0010 - 0023, Livingston County Records, and known as Livingston County Condominium Subdivision Plan No. 28, hereby amends the Master Deed of Moon Shadows on Rush Lake Condominium pursuant to the authority reserved in Articles X and XIII thereof for the purposes of amending the Condominium Subdivision Plan for the Project pursuant to the authority reserved in Articles X of the Master Deed to correct survey matters in the original Condominium Subdivision Plan and amendments thereto.

Upon the recording of this Amendment in the office of the Livingston County Register of Deeds, the Master Deed, the Bylaws and the Condominium Subdivision Plan shall be amended in the following manner:

1. Amended Sheets I, 3B and 4B of the Condominium Subdivision Plan of Moon Shadows on Rush Lake Condominium, as attached hereto, shall replace and supersede Sheets I, 3B and 4B of the Condominium Subdivision Plan of Moon Shadows on Rush Lake Condominium as originally recorded and previously amended, and the originally recorded and previously amended Sheets I, 3B, and 4B shall be of no further force or effect. The legal description on amended Sheet I shall replace and supersede the description of the condominium premises contained in Article II of the originally recorded and previously amended Master Deed.
2. In all respects other than as hereinabove indicated, the originally recorded and previously amended Master Deed of Moon Shadows on Rush Lake Condominium, including the Bylaws and Condominium Subdivision Plan respectively attached thereto as Exhibits A and B, recorded as aforesaid, is hereby ratified, confirmed and redeclared.

Dated: November 19, 2001

WITNESSES:

Christina DeFaut
Christina DeFaut

Nancy A. Marion
NANCY A. MARION

Rush Lake Development Group
Limited Partnership
a Michigan Limited Partnership
by: Calmic Properties Group, Inc., a Michigan
Corporation, its general partner

by: James R. Kremidas
James R. Kremidas,
President

STATE OF MICHIGAN)
COUNTY OF Washtenaw :SS

The foregoing instrument was acknowledged before me on November 24, 2001, by James R. Kremidas, the president of Calmic Properties Group, Inc., a Michigan Corporation, General Partner of Rush Lake Development Group Limited Partnership, a Michigan Limited Partnership, on behalf of the limited partnership.

Peggy M. Sweet

Notary Public
Washtenaw County, Michigan
My Commission Expires: 12-15-01

DRAFTED BY AND WHEN RECORDED RETURN TO:
Rizik & Rizik, P.C.
George F. Rizik, II (P30595)
Attorneys at Law
8226 South Saginaw Street
Grand Blanc, Michigan 48439
(810) 953-6000

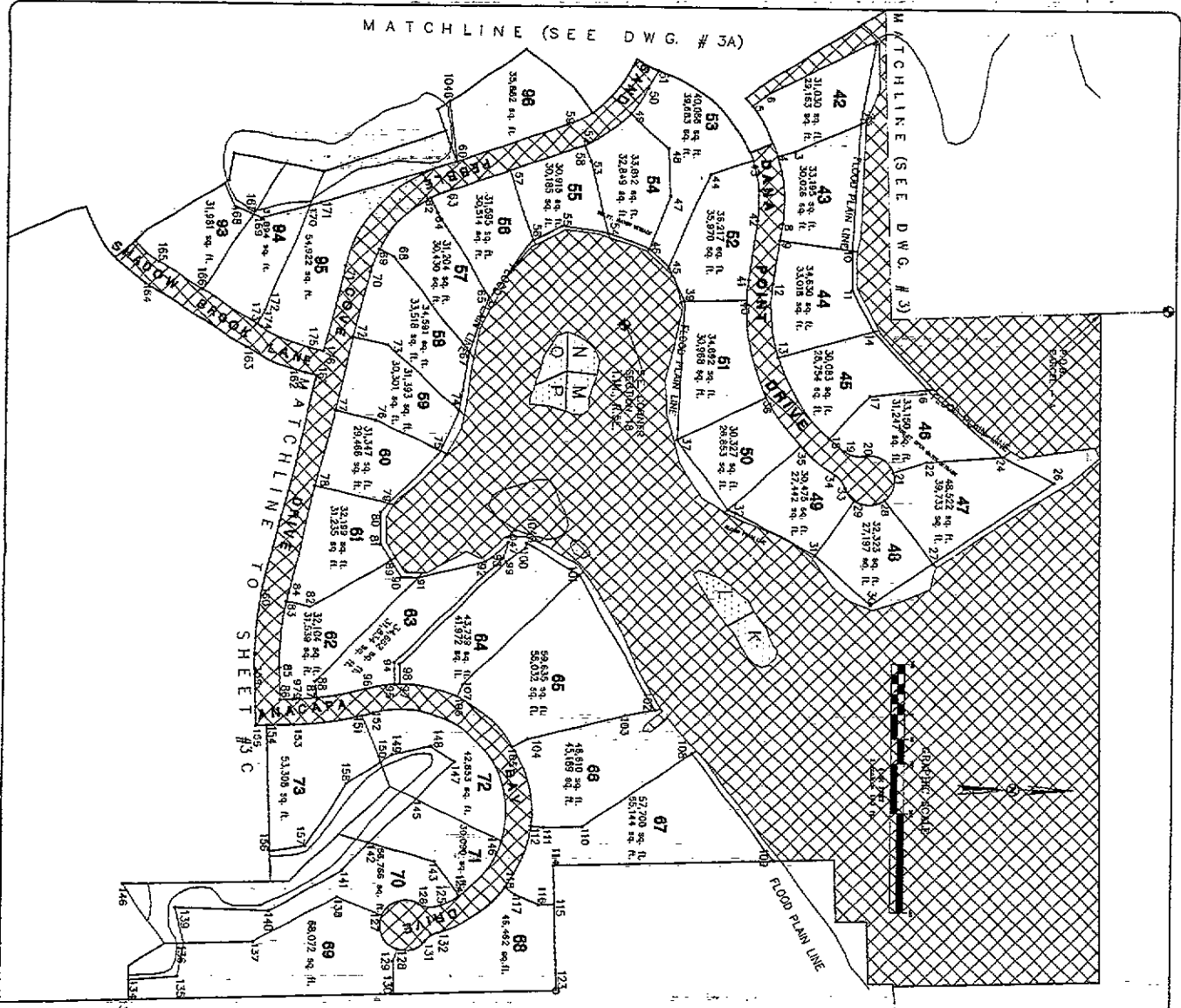


PEGGY M. SWEET
NOTARY PUBLIC - WASHTENAW COUNTY, MI
ACTING IN
CO., MI
MY COMMISSION EXP. 12/15/2001

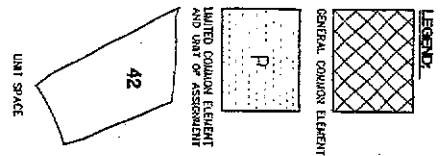


MATCHLINE (SEE DWG. # 5A)

MATCHLINE (SEE DWG. # 3)



"VISTA ON THE LAKE"
LIBER 3, PAGE 5
LIVINGSTON COUNTY RECORDS.



UNIT #	NORTHING	EASTING	NORTHING	EASTING	NORTHING	EASTING		
1	5526.02	5743.94	63	4706.76	6072.46	123	4910.16	7870.33
2	5516.15	5920.14	64	4693.97	6233.17	124	4746.27	7484.06
3	5506.28	5898.20	65	4726.76	6233.18	125	4713.00	7502.20
4	5496.41	5902.60	66	4800.79	6300.50	126	4668.83	7528.17
5	5486.54	5892.93	67	4800.79	6300.50	127	4668.83	7528.17
6	5476.67	5883.26	68	4826.28	6322.66	128	4622.48	7528.17
7	5466.80	5873.59	69	4826.28	6322.66	129	4622.48	7528.17
8	5456.93	5863.92	70	4826.28	6322.66	130	4622.48	7528.17
9	5447.06	5854.25	71	4826.28	6322.66	131	4622.48	7528.17
10	5437.19	5844.58	72	4826.28	6322.66	132	4622.48	7528.17
11	5427.32	5834.91	73	4826.28	6322.66	133	4622.48	7528.17
12	5417.45	5825.24	74	4826.28	6322.66	134	4622.48	7528.17
13	5407.58	5815.57	75	4826.28	6322.66	135	4622.48	7528.17
14	5397.71	5805.90	76	4826.28	6322.66	136	4622.48	7528.17
15	5387.84	5796.23	77	4826.28	6322.66	137	4622.48	7528.17
16	5377.97	5786.56	78	4826.28	6322.66	138	4622.48	7528.17
17	5368.10	5776.89	79	4826.28	6322.66	139	4622.48	7528.17
18	5358.23	5767.22	80	4826.28	6322.66	140	4622.48	7528.17
19	5348.36	5757.55	81	4826.28	6322.66	141	4622.48	7528.17
20	5338.49	5747.88	82	4826.28	6322.66	142	4622.48	7528.17
21	5328.62	5738.21	83	4826.28	6322.66	143	4622.48	7528.17
22	5318.75	5728.54	84	4826.28	6322.66	144	4622.48	7528.17
23	5308.88	5718.87	85	4826.28	6322.66	145	4622.48	7528.17
24	5299.01	5709.20	86	4826.28	6322.66	146	4622.48	7528.17
25	5289.14	5699.53	87	4826.28	6322.66	147	4622.48	7528.17
26	5279.27	5689.86	88	4826.28	6322.66	148	4622.48	7528.17
27	5269.40	5680.19	89	4826.28	6322.66	149	4622.48	7528.17
28	5259.53	5670.52	90	4826.28	6322.66	150	4622.48	7528.17
29	5249.66	5660.85	91	4826.28	6322.66	151	4622.48	7528.17
30	5239.79	5651.18	92	4826.28	6322.66	152	4622.48	7528.17
31	5229.92	5641.51	93	4826.28	6322.66	153	4622.48	7528.17
32	5220.05	5631.84	94	4826.28	6322.66	154	4622.48	7528.17
33	5210.18	5622.17	95	4826.28	6322.66	155	4622.48	7528.17
34	5200.31	5612.50	96	4826.28	6322.66	156	4622.48	7528.17
35	5190.44	5602.83	97	4826.28	6322.66	157	4622.48	7528.17
36	5180.57	5593.16	98	4826.28	6322.66	158	4622.48	7528.17
37	5170.70	5583.49	99	4826.28	6322.66	159	4622.48	7528.17
38	5160.83	5573.82	100	4826.28	6322.66	160	4622.48	7528.17
39	5150.96	5564.15	101	4826.28	6322.66	161	4622.48	7528.17
40	5141.09	5554.48	102	4826.28	6322.66	162	4622.48	7528.17
41	5131.22	5544.81	103	4826.28	6322.66	163	4622.48	7528.17
42	5121.35	5535.14	104	4826.28	6322.66	164	4622.48	7528.17
43	5111.48	5525.47	105	4826.28	6322.66	165	4622.48	7528.17
44	5101.61	5515.80	106	4826.28	6322.66	166	4622.48	7528.17
45	5091.74	5506.13	107	4826.28	6322.66	167	4622.48	7528.17
46	5081.87	5496.46	108	4826.28	6322.66	168	4622.48	7528.17
47	5072.00	5486.79	109	4826.28	6322.66	169	4622.48	7528.17
48	5062.13	5477.12	110	4826.28	6322.66	170	4622.48	7528.17
49	5052.26	5467.45	111	4826.28	6322.66	171	4622.48	7528.17
50	5042.39	5457.78	112	4826.28	6322.66	172	4622.48	7528.17
51	5032.52	5448.11	113	4826.28	6322.66	173	4622.48	7528.17
52	5022.65	5438.44	114	4826.28	6322.66	174	4622.48	7528.17
53	5012.78	5428.77	115	4826.28	6322.66	175	4622.48	7528.17
54	5002.91	5419.10	116	4826.28	6322.66	176	4622.48	7528.17
55	4993.04	5409.43	117	4826.28	6322.66	177	4622.48	7528.17
56	4983.17	5400.00	118	4826.28	6322.66	178	4622.48	7528.17
57	4973.30	5390.57	119	4826.28	6322.66	179	4622.48	7528.17
58	4963.43	5381.14	120	4826.28	6322.66	180	4622.48	7528.17
59	4953.56	5371.71	121	4826.28	6322.66	181	4622.48	7528.17
60	4943.69	5362.28	122	4826.28	6322.66	182	4622.48	7528.17
61	4933.82	5352.85	123	4826.28	6322.66	183	4622.48	7528.17
62	4923.95	5343.42	124	4826.28	6322.66	184	4622.48	7528.17
63	4914.08	5333.99	125	4826.28	6322.66	185	4622.48	7528.17
64	4904.21	5324.56	126	4826.28	6322.66	186	4622.48	7528.17
65	4894.34	5315.13	127	4826.28	6322.66	187	4622.48	7528.17
66	4884.47	5305.70	128	4826.28	6322.66	188	4622.48	7528.17
67	4874.60	5296.27	129	4826.28	6322.66	189	4622.48	7528.17
68	4864.73	5286.84	130	4826.28	6322.66	190	4622.48	7528.17
69	4854.86	5277.41	131	4826.28	6322.66	191	4622.48	7528.17
70	4844.99	5267.98	132	4826.28	6322.66	192	4622.48	7528.17
71	4835.12	5258.55	133	4826.28	6322.66	193	4622.48	7528.17
72	4825.25	5249.12	134	4826.28	6322.66	194	4622.48	7528.17
73	4815.38	5239.69	135	4826.28	6322.66	195	4622.48	7528.17
74	4805.51	5230.26	136	4826.28	6322.66	196	4622.48	7528.17
75	4795.64	5220.83	137	4826.28	6322.66	197	4622.48	7528.17
76	4785.77	5211.40	138	4826.28	6322.66	198	4622.48	7528.17
77	4775.90	5201.97	139	4826.28	6322.66	199	4622.48	7528.17
78	4766.03	5192.54	140	4826.28	6322.66	200	4622.48	7528.17
79	4756.16	5183.11	141	4826.28	6322.66	201	4622.48	7528.17
80	4746.29	5173.68	142	4826.28	6322.66	202	4622.48	7528.17
81	4736.42	5164.25	143	4826.28	6322.66	203	4622.48	7528.17
82	4726.55	5154.82	144	4826.28	6322.66	204	4622.48	7528.17
83	4716.68	5145.39	145	4826.28	6322.66	205	4622.48	7528.17
84	4706.81	5135.96	146	4826.28	6322.66	206	4622.48	7528.17
85	4696.94	5126.53	147	4826.28	6322.66	207	4622.48	7528.17
86	4687.07	5117.10	148	4826.28	6322.66	208	4622.48	7528.17
87	4677.20	5107.67	149	4826.28	6322.66	209	4622.48	7528.17
88	4667.33	5098.24	150	4826.28	6322.66	210	4622.48	7528.17
89	4657.46	5088.81	151	4826.28	6322.66	211	4622.48	7528.17
90	4647.59	5079.38	152	4826.28	6322.66	212	4622.48	7528.17
91	4637.72	5069.95	153	4826.28	6322.66	213	4622.48	7528.17
92	4627.85	5060.52	154	4826.28	6322.66	214	4622.48	7528.17
93	4617.98	5051.09	155	4826.28	6322.66	215	4622.48	7528.17
94	4608.11	5041.66	156	4826.28	6322.66	216	4622.48	7528.17
95	4598.24	5032.23	157	4826.28	6322.66	217	4622.48	7528.17
96	4588.37	5022.80	158	4826.28	6322.66	218	4622.48	7528.17
97	4578.50	5013.37	159	4826.28	6322.66	219	4622.48	7528.17
98	4568.63	5003.94	160	4826.28	6322.66	220	4622.48	7528.17
99	4558.76	4994.51	161	4826.28	6322.66	221	4622.48	7528.17
100	4548.89	4985.08	162	4826.28	6322.66	222	4622.48	7528.17
101	4539.02	4975.65	163	4826.28	6322.66	223	4622.48	7528.17
102	4529.15	4966.22	164	4826.28	6322.66	224	4622.48	7528.17
103	4519.28	4956.79	165	4826.28	6322.66	225	4622.48	7528.17
104	4509.41	4947.36	166	4826.28	6322.66	226	4622.48	7528.17
105	4499.54	4937.93	167	4826.28	6322.66	227	4622.48	7528.17
106	4489.67	4928.50	168	4826.28	6322.66	228	4622.48	7528.17
107	4479.80	4919.07	169	4826.28	6322.66	229	4622.48	7528.17
108	4469.93	4909.64	170	4826.28	6322.66	230	4622.48	7528.17
109	4460.06	4900.21	171	4826.28	6322.66	231	4622.48	7528.17
110	4450.19	4890.78	172	4826.28	6322.66	232	4622.48	7528.17
111	4440.32	4881.35	173	4826.28	6322.66	233	4622.48	7528.17
112	4430.45	4871.92	174	4826.28	6322.66	234	4622.48	7528.17
113	4420.58	4862.49	175	4826.28	6322.66	235	4622.48	7528.17
114	4410.71	4853.06	176	4826.28	6322.66	236	4622.48	7528.17
115	4400.84	4843.63	177	4826.28	6322.66	237	4622.48	7528.17
116	4390.97	4834.20	178	4826.28	6322.66	238	4622.48	7528.17
117	4381.10	4824.77	179	4826.28	6322.66	239	4622.48	7528.17
118	4371.23	4815.34	180	4826.28	6322.66	240	4622.48	7528.17
119	4361.36	4805.91	181	4826.28	6322.66	241	4622.48	7528.17
120	4351.49							

